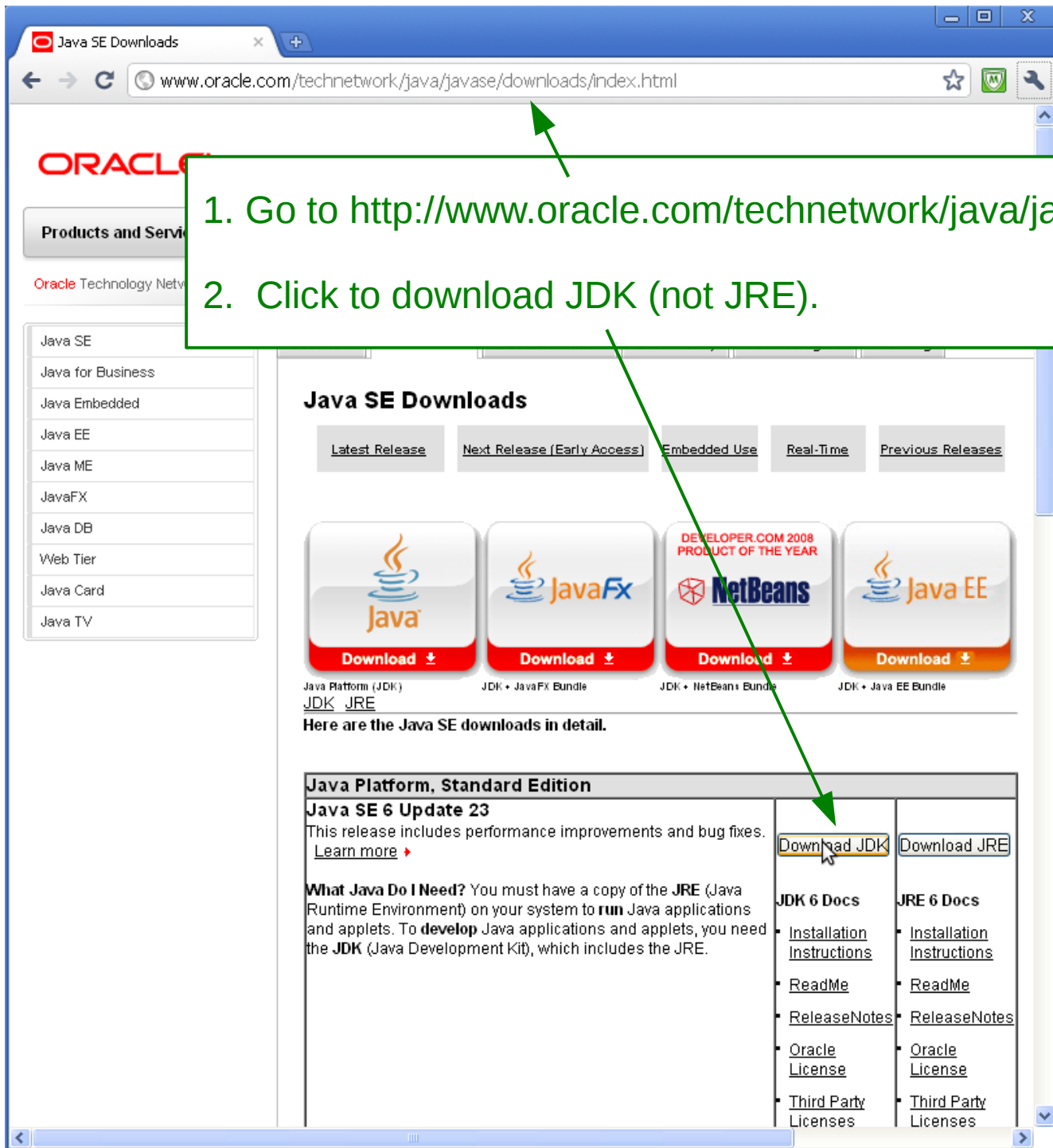


Java Development Kit Download and Installation Instructions for Windows

CS 2334

Prof. Dean Hougen
School of Computer Science
University of Oklahoma



1. Go to <http://www.oracle.com/technetwork/java/javase/downloads/index.html>.
2. Click to download JDK (not JRE).

Java SE Development Kit 6u23

ORACLE Sun Developer Network (SDN)

Java Solaris Communities My SDN Account Join SDN

SDN Home > Download Center >

Java SE Development Kit 6u23

Provide Information, then Continue to Download

Select Platform and Language for your download:

Platform: Windows

Language: Multi-language

I agree to the Java SE Development Kit 6u23 License Agreement.

Continue »

GlassFish App Server
Fast, Easy & Reliable

NetBeans Simple, Intuitive IDE

Getting Started?

- » New to Java Center
- » New to Solaris Center
- » Sun Studio

Download Resources

- » Download FAQs
- » Download Customer Service

Related Resources

- » Java.sun.com
- » Solaris Developer Center
- » JavaFX
- » Web Developer Resource Center
- » Developer Services
- » JavaOne Online
- » Sun Student Developer Program
- » SunSolve
- » Sun Microsystems Press
- » Sun Partner Advantage Program for ISVs

3. Select your Platform.
4. Agree to the License.
5. Click "Continue."

Download Java SE Develop... x

https://cds.sun.com/is-bin/INTERSHOP.enfinity/WFS/CDS-CDS_Developer-Site/en_US/-/USD/View

ORACLE Sun Developer Network (SDN)

Java ▾ Solaris ▾ Communities ▾ My SDN Account Join SDN

SDN Home > Download Center >

Download Java SE Development Kit 6u23 for Windows, Multi-language

Download Information and Files

Instructions: Click the file name to start the download.

Available Files

File Description and Name	Size
Java SE Development Kit 6u23 jdk-6u23-windows-i586.exe	76.32 MB

Notes:

- For download problems or questions, please see the [Download FAQs](#).
- If you logged in first, you can complete this download any time in the next 30 days. Just visit your [Download History](#).
- For Customer Service, contact [Download Customer Service](#).

Getting Started?

- » New to Java Center
- » New to Solaris Center
- » Sun Studio

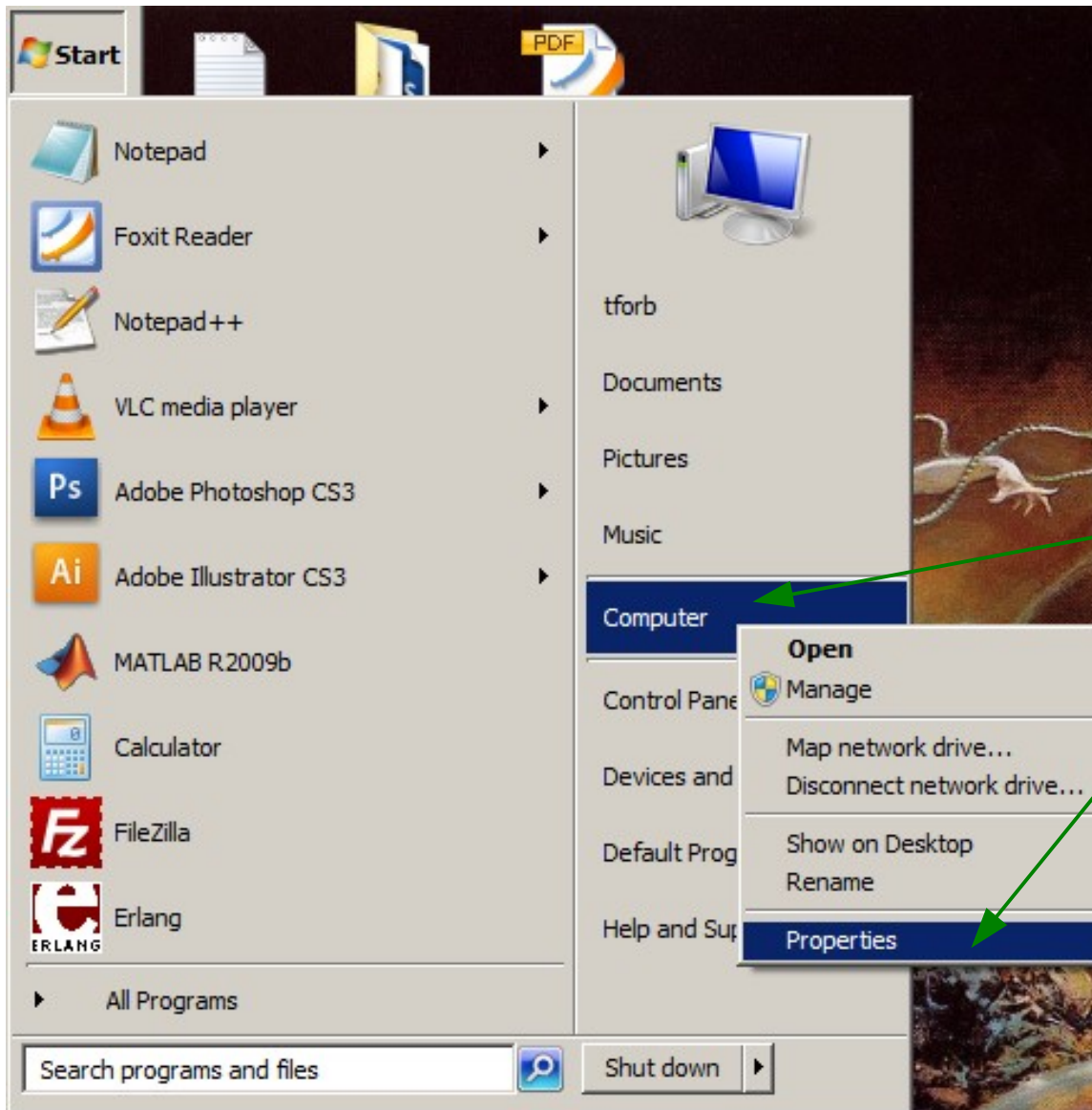
Download Resources

- » Download FAQs
- » Download Customer Service

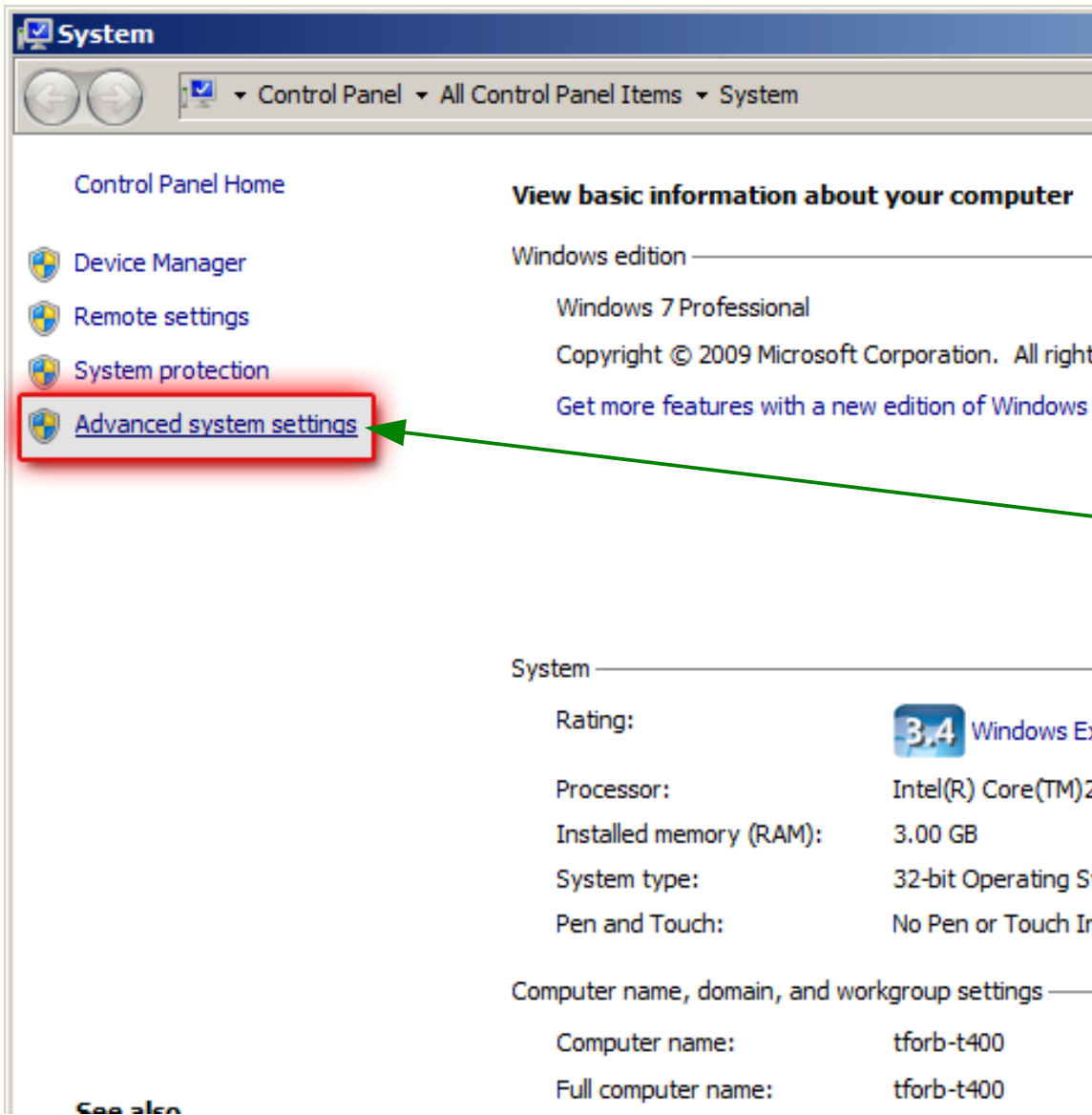
Related Resources

- » Java.sun.com
- » Solaris Developer Center
- » JavaFX
- » Web Developer Resource Center
- » Developer Services
- » JavaOne Online
- » Sun Student Developer Program
- » SunSolve
- » Sun Microsystems Press
- » Sun Partner Advantage Program for ISVs

6. Click to download Java.
7. Choose "Save."
8. Wait for the download to finish.
9. Choose "Run" and accept the security warning.
10. Click your way through the setup wizard, accepting the defaults.
11. Wait for the install to finish.
12. Click "Finish" to complete installation.



13. Right click "Computer."
14. Select properties.



The screenshot shows the Windows 7 System Control Panel window. The title bar reads "System". The breadcrumb navigation shows "Control Panel > All Control Panel Items > System". On the left sidebar, "Advanced system settings" is highlighted with a red box. The main content area is titled "View basic information about your computer" and displays system information such as "Windows edition: Windows 7 Professional" and "System type: 32-bit Operating System".

Control Panel Home

Device Manager

Remote settings

System protection

Advanced system settings

View basic information about your computer

Windows edition _____

Windows 7 Professional

Copyright © 2009 Microsoft Corporation. All rights reserved.

Get more features with a new edition of Windows 7

System _____

Rating: **3.4** Windows Experience Index

Processor: Intel(R) Core(TM)2 Duo CPU E6700 @ 3.00GHz

Installed memory (RAM): 3.00 GB

System type: 32-bit Operating System

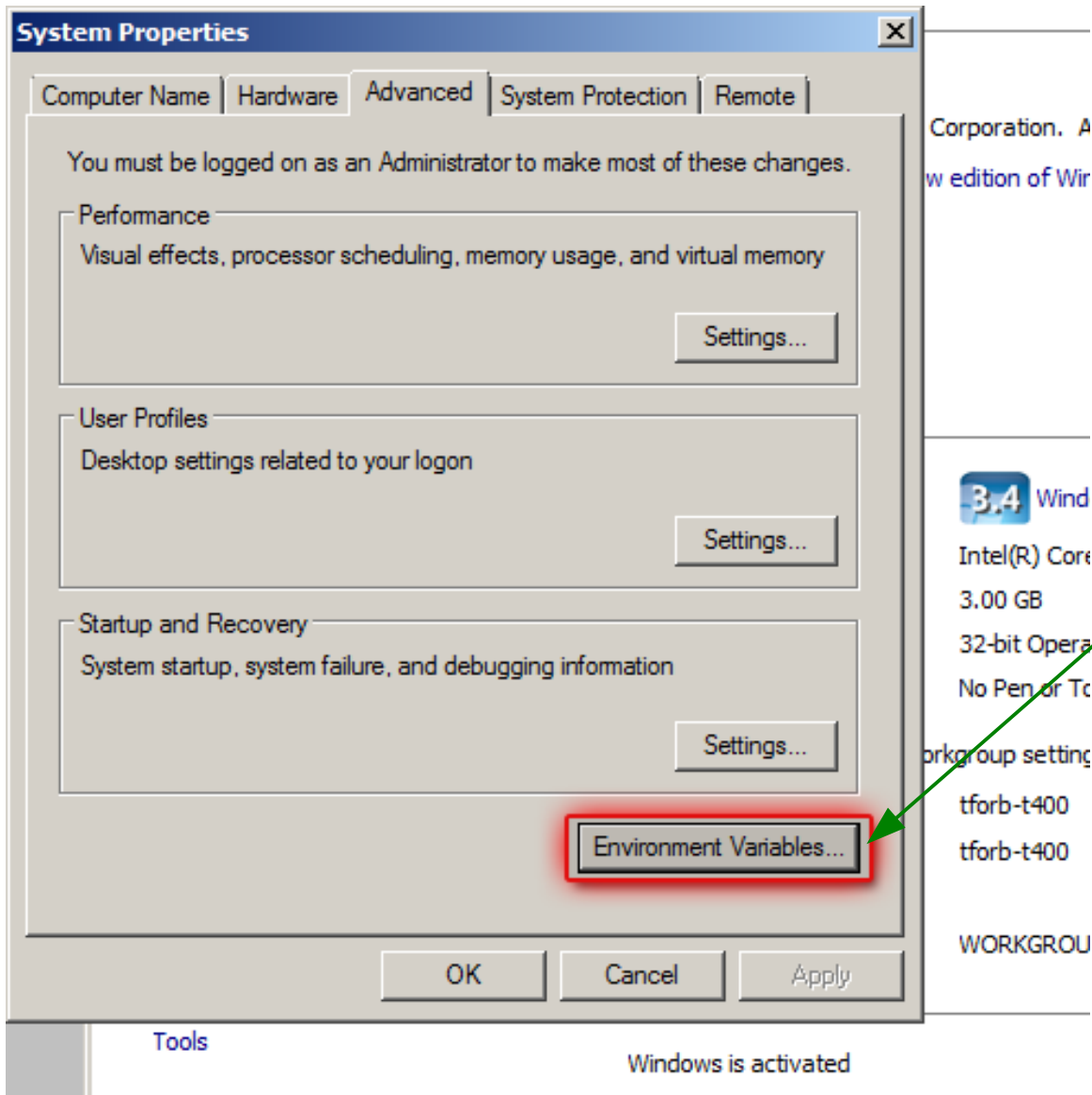
Pen and Touch: No Pen or Touch Input

Computer name, domain, and workgroup settings _____

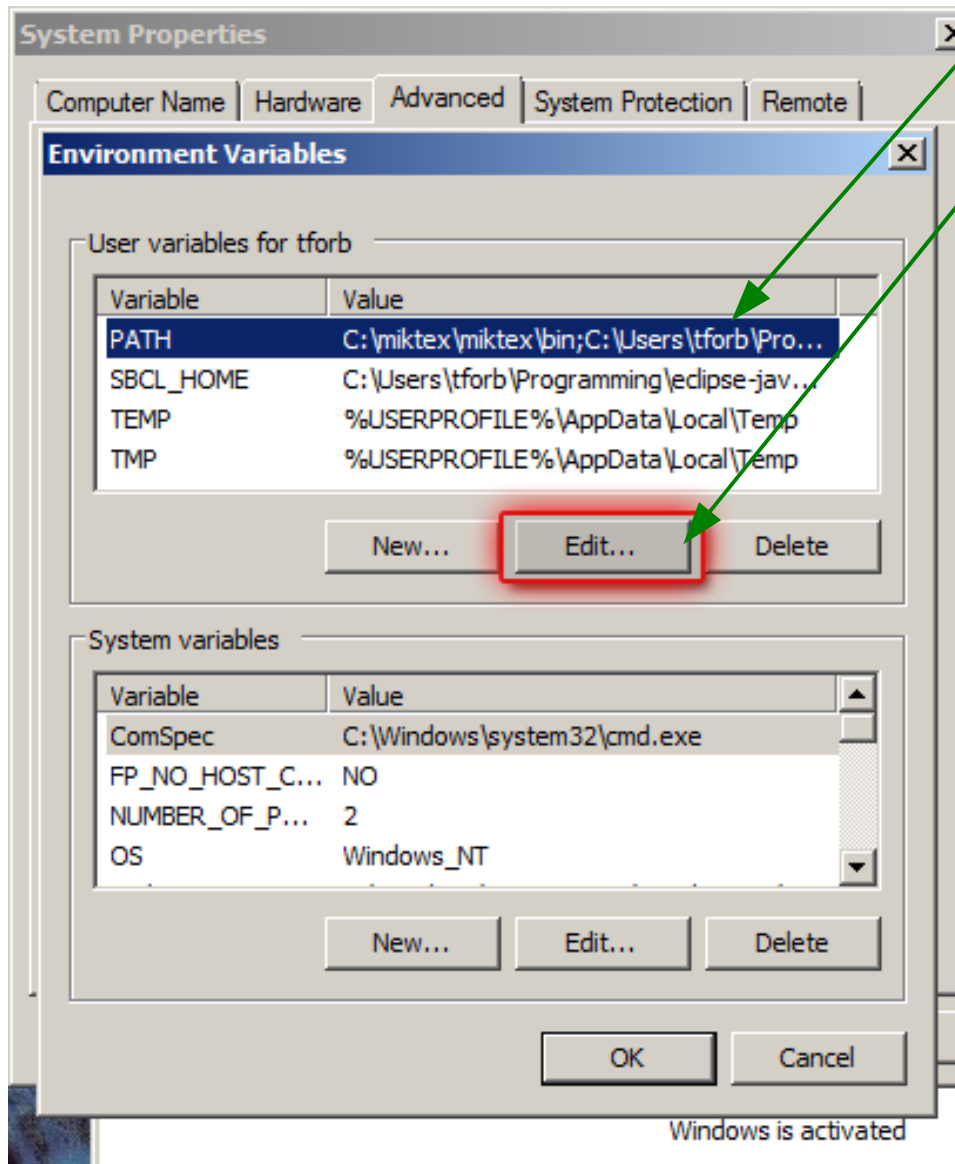
Computer name: tforb-t400

Full computer name: tforb-t400

15. Select "Advanced system settings."



16. Select "Environment Variables."



17. Select your "PATH."

18. Click "Edit."

19. **Carefully add** the following (or the location of your JDK install) **to the end** of your path

`;C:\Program Files\Java\jdk1.6.0_23\bin`

Note the word "**add**" in this step. Do not delete your existing PATH.

Also, note the phrase "**to the end**" in this step. Do not mutilate your existing PATH by inserting this text into the middle of an existing PATH element.

Finally, note the word "**Carefully**" in this step. Do not otherwise modify your PATH except exactly as directed above.

20. Click "OK."